

LED HIGH BAY LIGHT CATALOG

2023



LED Lights You Can Trust

Our LED high bay lights are available in your choice to accommodate your space with ease and affordability.

WELCOME

When looking for the right luminaires for your location, our selection of affordable LED high bays is the better solution. Designed for indoor or outdoor use in a variety of commercial and professional settings, such as factories, warehouses, shops, malls, gyms, and more, these LED fixtures offer reliable performance in all sorts of locations, so you don't have to worry about constantly replacing fixtures.

BRAND

Lightide Manufactory Co., Ltd. was set up in 2009. By now, we have focused on the lighting industry for over 20 years. In addition, we have designed and produced several varieties of commercial & outdoor LED light fixtures. Till now, we have provided service to more than 200 companies from 19 countries.



BENEFIT



INVENTORY REDUCED

CCT & Wattage Seletable



LONG-TERM WARRANTY

5~10 Years Warranty



EMERGENCY SOLUTION

UL924 & CEC Title-20 Compliant

ROUND STYLE

— LED HIGH BAYS —

FACTORY ASSEMBLY

Feature

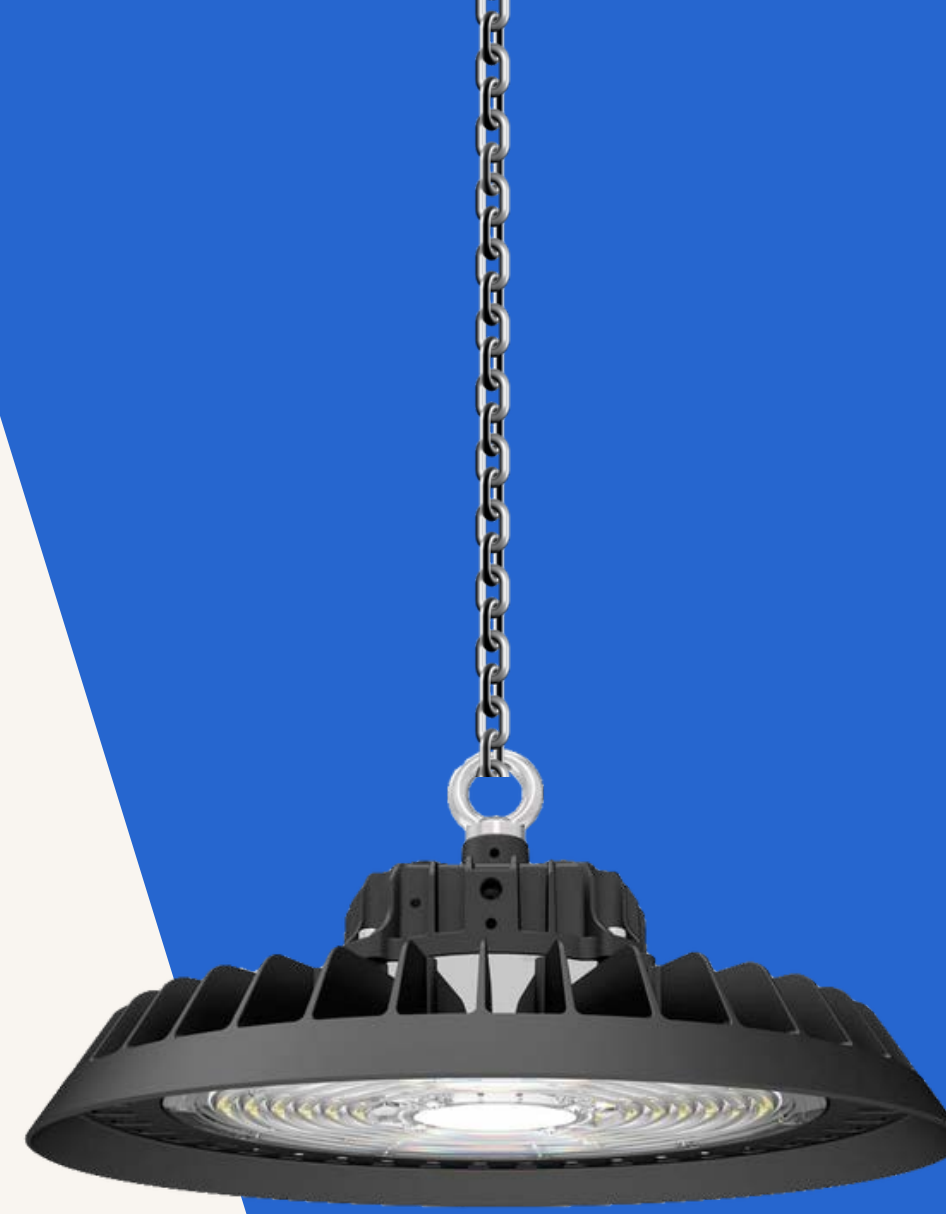
Rugged Grade	Aluminum + PC/Glass
High Efficacy	140-160 LPW
Anti Corrosion	Polyester Powder coating
Surge Protection	Std. 4-6 KV
Waterproof	IP65 Rated
Emergency Mode	<ul style="list-style-type: none"> • UL924 & CEC Title-20 • Factory Assembly • Integrated switch & Indicator lamp

Order Info.

Com.	Series	Size	Power	Voltage	CCT	Option	Duration (EM)	Finish
LT	UBA	280	100W	Blank=100-277vac	30K =3000K	DM= 1-10VDC Dimming	Std.=90 Min.	Std.=Black
		320	150W	HV =200-480vac	40K=4000K	PC= Photocell	2H= 120 Min.	
		400	200W	EV=200-240vac	50K=5000K	MS= Motion Sensor	3H= 180 Min.	
			240W		57K= 5700K	EM=Emergency (Factory-Assm.)		
			150W	C=100-150-200W Selectable	T=30K-40K-50K Selectable	EMH=Emergency (Field-Assem.)		



Factory-Assembly (EM)



Field-Assembly (EMH)



TUYA CONTROL

Feature

Rugged Grade	Aluminum + PC/Glass
High Efficacy	150 LPW 170 LPW 190 LPW
Anti Corrosion	Polyester Powder coating
Surge Protection	Std. 4-6 KV
Waterproof	IP65 Rated
Field Selectable	CCT & Wattage
Tuya Motion Sensor	Available (App Control)

Order Info.

Com.	Series	Size	Power	Voltage	CCT	Option	Duration (EM)	Beam Angle
LT	UBA	280C	100W	Blank=100-277vac	30K=3000K	DM= 1-10VDC Dim	Std.=90 Min.	Std.= 120 deg.
		320C	150W	HV =200-480vac	40K=4000K	PC= Photocell	2H= 120 Min.	90D = 90 deg.
		400C	200W		50K=5000K	MS= Motion Sensor	3H= 180 Min.	60D =60 deg.
		240W		57K= 5700K	EMH=Emergency			
		300W		65K=6500K	PC2 = PC +Tuya			
		200WC	100W-150W-200W Tunable		T =30K-40K-50K Tunable	MS1 = ON/OFF MS MS2 = MS +Tuya		



Tuya Motion Sensor



Field-Assembly (EMH)



NSF & IP69K FOOD GRADE

Feature

Rugged Grade	Aluminum + PC/Glass
High Efficacy	160 LPW 200 LPW Options
Anti Corrosion	Polyester Powder coating
Surge Protection	Std. 4-6 KV
Rated	IP69K & IK10
Field Selectable	CCT & Wattage
Food Grade	NSF Cer.
Motion Sensor	Available (Remote Control)

Order Info.

Com.	Series	Voltage	Power	CCT	Option	Beam Angle
LT	LBA	Blank= 100-277vac	100	30K =3000K	DM= 1-10VDC Dim	Std.= 120 deg.
		H =200-480VAC	150	40K=4000K	PC= Photocell	90D = 90 deg.
			200	50K=5000K	MS= Motion Sensor	60D =60 deg.
		150CP =100W-120W-150W Selectable	57K= 5700K			
		200CP =100W-150W-200W Selectable	T =30K-40K-50K Selectable			



CCT & Wattage Selectable



IP69K Rated



CHOOSING GUIDE

01 Choose Mount Style

LED high bay lights can be surface mounted with a junction box or suspended mount with a pendant.

02 Choose Wattage

100W 250W EQU. Up to 14,094 lm	150W 400W EQU. Up to 20,945 lm	200W 600W EQU. Up to 28,009 lm	240W 1,000W EQU. Up to 33,400 lm
---	---	---	---

03 Choose Options

Voltage	CCT	Control	Cover
100-277vac	3000K	1-10vdc dim	Frosty
347vac	4000K	Motion Sensor	Clear
480 vac	5000K	Photocell	
	Selectable	Emergency Kit	

04 Choose Accessories





LINEAR STYLE

— LED HIGH BAYS —

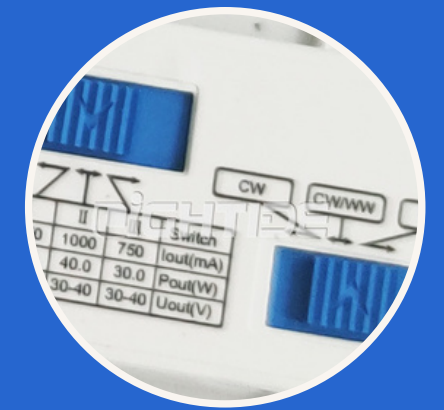
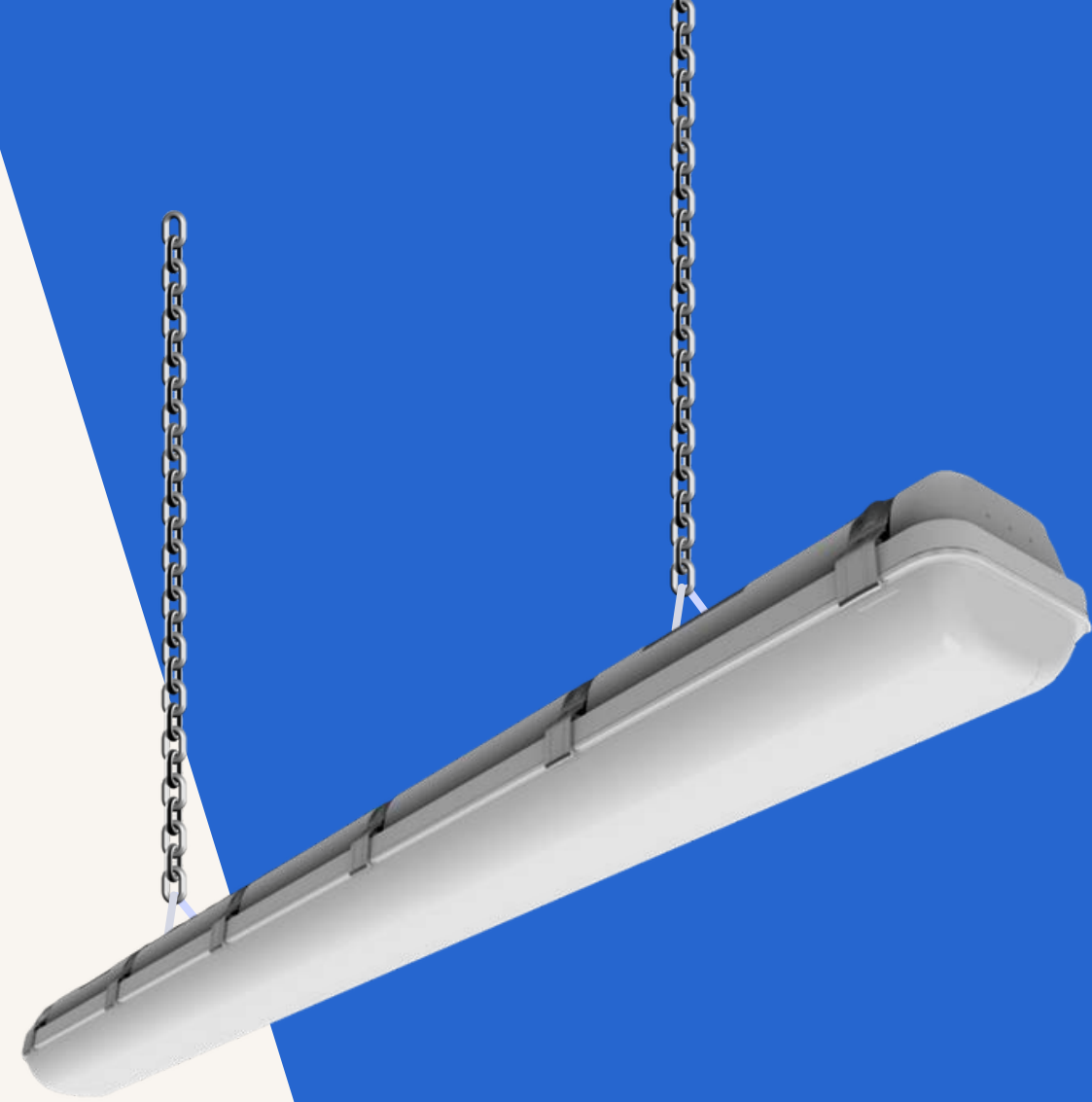
VAPOR TIGHT

Feature

Shatter Proof
 High Efficacy
 Grade
 Rated
 Field Selectable
 Emergency Mode

Plastic ABS/PC
 130 LPW (F) | 150 LPW (C) Options
 Vapor Tight | UL94-V0 Flame
 IP65 & IK08
 CCT & Wattage

- UL924 & CEC Title-20
- Factory Assembly
- Integrated switch & Indicator lamp



CCT & Wattage Selectable



Emergency Backup



Liquid Tight

Order Info.

Com.	Series	Length	Rated	Voltage	CCT	Option	Cover	
LT	TPA	2=2'	20=20W	Blank=100-277vac	30K =3000K	DM=1-10VDC	F=Frosty	
			4=4'	36=40W	HV =200-480vac	40K=4000K	PC=Photocell	C=Clear
			40CP =32W-40W-50W Select.	EV=200-240vac	50K=5000K	MS=Motion		
		44CP =32W-44W-50W Select.		57K= 5700K	EM=Emergency			
		8=8'	12=120W		T = 30K-40K-50K Selectable			
			08=80W 10=100W		65K=6500K			



WIDE BEAM ANGLE

Feature

Shatter Proof
 High Efficacy
 Grade
 Beam Angle
 Rated
 Field Selectable
 Emergency Mode

Plactic ABS/PC
 130 LPW (F)
 Vapor Tight | UL94-V0 Flame
 Wide 165x120 degrees
 IP65 & IK08
 CCT & Wattage

- UL924 & CEC Title-20
- Factory Assembly
- Integrated switch & Indicator lamp

Order Info.

Com.	Series	Length	Rated	Voltage	CCT	Option	Cover
LT	VTA	4=4'	50CP=40-50-60 W 40CP=32-40-50 W	Blank=100-277vac	30K =3000K 40K=4000K 50K=5000K 57K= 5700K T=3000K-4000K-5000K Selectable	DM=1-10VDC PC=Photocell MS=Motion EM=Emergency	Blank=Frosty



CCT & Wattage Selectable



Emergency Backup



J-Box Mount



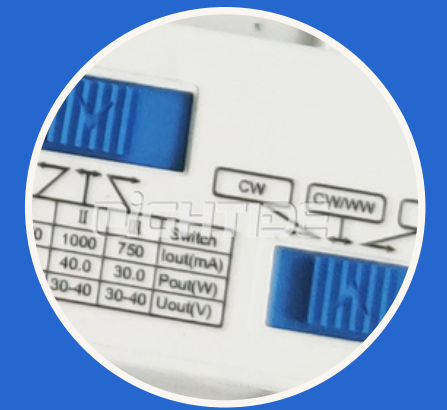
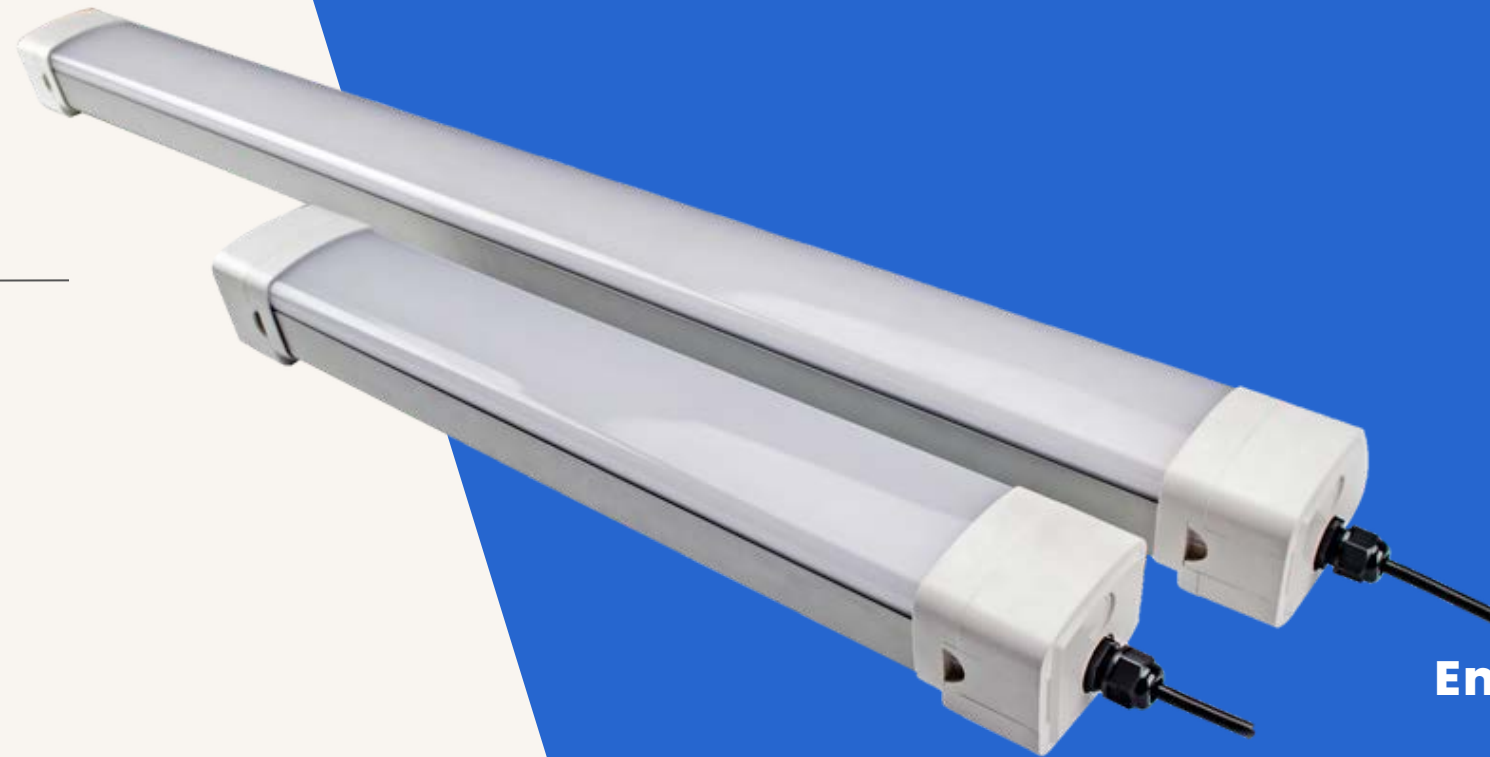
LINKABLE STYLE

Feature

Material	Aluminum/PC
High Efficacy	120 LPW 140LPW 160 LPW
Grade	UL94-V0 Flame
Beam Angle	120 degrees
Rated	IP65 & IK08
Emergency Mode	<ul style="list-style-type: none"> • UL924 & CEC Title-20 • Factory Assembly • Integrated switch & Indicator lamp

Order Info.

Com.	Series	Length	Rated	Voltage	CCT	Option	Cover
LT	TPL	2=2'	20=20w	Blank=100-277vac	30K=3000K	DM=1-10VDC	F=Frosty
		4=4'	40=40w	HV =200-480vac	40K=4000K	PC=Photocell	C=Clear
		5=5'	60=60w	EV=200-240vac	50K=5000K	MS=Motion	
		8=8'	80=80W		57K= 5700K	EM=Emergency Kit	



CCT & Wattage Selectable



Emergency Backup



Linkable Connector

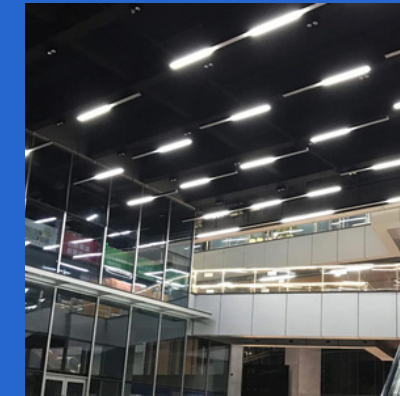
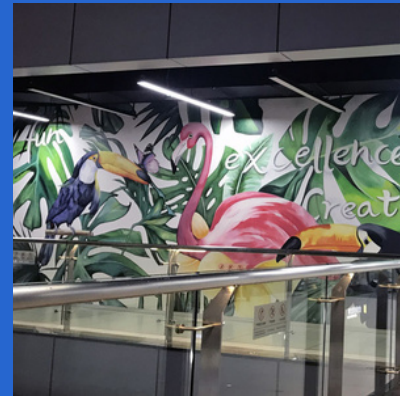


CASE

“

Great emergency led high bay products, takes 24 hours to charge up the battery the first time around. LED lighting is great for my shop.

”



**LET'S WORK
TOGETHER**

Lightide Manufactory Co., Ltd.
www.lightideled.com | sales@lightideled.com
Tel: +86-755-8383-7000 | +86-755-83837086
ADD: Shenzhen, China

