



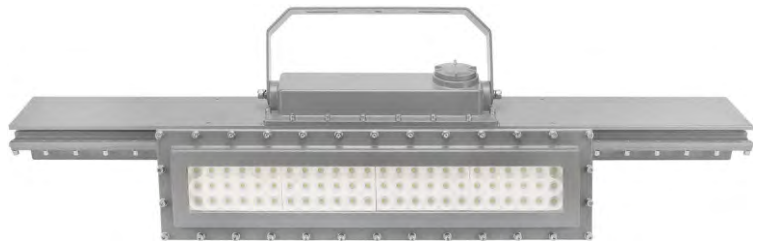
## **EFLN SERIES**

**Exposion-proof  
LED Flood Light**



# EFLN SERIES

## EX LED Flood Light



When your operations demand the highest level of safety and reliability, you can't afford to compromise on lighting. Our LED Explosion Proof Flood Lights are engineered to meet the most stringent safety standards while delivering superior performance, making them the ideal choice for hazardous locations

Application	Applies to hazardous locations of Zone 1 and Zone2 with explosive gas atmosphere, Zone 21 and Zone22 with explosive dust atmosphere.
Rating	II 2G Ex db op is IIC T5... T6, Ex db op is IIC T5... T6 Gb, Ip66
Version	2025v1

### DESCRIPTION

Our LED Explosion Proof Flood Lights are designed to deliver exceptional performance and reliability in demanding environments. Built with durable 10mm tempered glass and offering IP66-rated protection, they are resistant to water, dust, and harsh conditions, making them ideal for industrial and hazardous locations. Available in power options ranging from 50 to 240 watts, they cater to diverse lighting needs. With robust 4-6KV surge protection and backed by a 5-year warranty, these flood lights provide peace of mind and long-lasting value for your lighting solutions.

### CONSTRUCTION & MATERIALS

- ◆ DMC Housing, fully sealed to be dirt and bug proof
- ◆ Impact-proof 10mm glass
- ◆ IP 66/67 rating waterproof protection
- ◆ Grey finish
- ◆ Surge Protection 4KV-6KV

### EMERGENCY OPTION

- ◆ UL 924 & CEC title 20 compliant
- ◆ Charge time: 24 hrs
- ◆ Emergency time: 90~180 minutes

### MOUNTING AND WIRING

- ◆ Pendant mount /Surface Mount

### ENVIRONMENTAL SYSTEM

- ◆ Where flammable vapors, gases, ignitable
- ◆ dusts, fibers or flyings are present;
- ◆ indoors or outdoors
- ◆ Where extremely corrosive, wet, dusty, hot and/or cold conditions exist

### WARRANTY

- ◆ 5 Years

### ELECTRICAL SYSTEM

- ◆ Input voltage 100-277VAC
- ◆ EX: ATEX:
  - II 2G Ex db op is IIC T5... T6 Gb, IP66
  - 112D Ex tb op is IIIC T94°C... T89°C ... T84°C Db;
- IECEX:
  - Ex db op is IIC T5... T6 Gb, IP66
  - Ex tb op is IIIC T94°C... T89°C ... T84°C Db;

### OPTICAL SYSTEM

- ◆ 100-120 lm/w output efficacy
- ◆ CCT: 3000K, 4000K, 5000K, 5700K, 6500K.
- ◆ Beam angle: 120°

### CORROSION PROOF GRADE

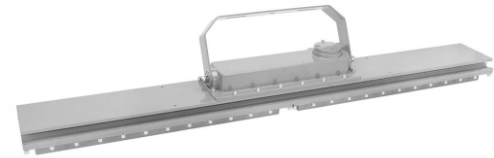
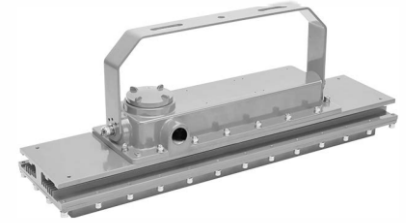
- ◆ WF2

### CABLE ENTRY

- ◆ NPT 3/4, NPT 1/2

### STANDARD

- ◆ EN61347-1, EN61347-2-13, EN60598-2-1, EN60598-1
- ◆ CAN/CSA -C.22.2 NO. 250.0, C22.2 No. 137, CSA-C22.2 No. 250.13-12
- ◆ UL 8750 (Edition 1), UL 844 (Edition 12)
- ◆ UL 924, UL 1598



### DATA SHEET

Model#	LT-EFLN050	LT-EFLN080	LT-EFLN100	LT-EFLN150	LT-EFLN200	LT-EFLN240
Rated Power	50W	80W	100W	150W	200W	240W
Output Efficacy	120-140 LPW	120-140 LPW	120-140 LPW	120-140 LPW	120-140 LPW	120-140 LPW
Input Voltage	100~277VAC	100~277VAC	100~277VAC	100~277VAC	100~277VAC	100~277VAC
Beam Angle	120°	120°	120°	120°	120°	120°
Dimension (LXWXH)	617X155X148 mm	617X155X148 mm	617X155X148 mm	1235X155X148 mm	1235X155X148 mm	1235X155X148 mm
Waterproof	IP 66	IP 66	IP 66	IP 66	IP 66	IP 66
THD	<10%	<10%	<10%	<10%	<10%	<10%
Corrosion Proof	WF 2	WF 2	WF 2	WF 2	WF 2	WF 2
Cable Entry	NPT3/4, NPT 1/2	NPT3/4, NPT 1/2	NPT3/4, NPT 1/2	NPT3/4, NPT 1/2	NPT3/4, NPT 1/2	NPT3/4, NPT 1/2
L70 Life	>50,000hrs	>50,000hrs	>50,000hrs	>50,000hrs	>50,000hrs	>50,000hrs
Work Temp.	-30°C~50°C	-30°C~50°C	-30°C~50°C	-30°C~50°C	-30°C~50°C	-30°C~50°C
Certificate	ATEX, CNEX	ATEX, CNEX	ATEX, CNEX	ATEX, CNEX	ATEX, CNEX	ATEX, CNEX

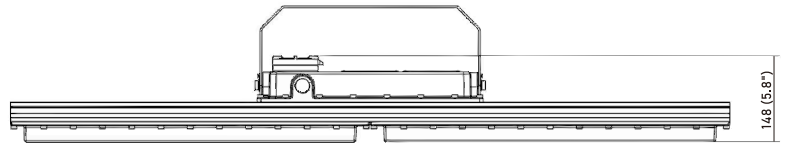
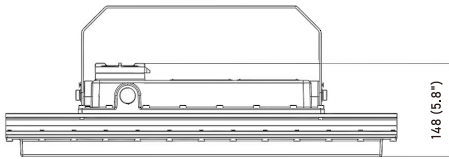
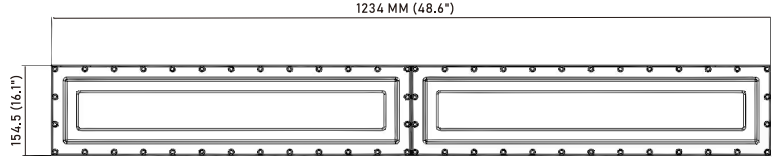
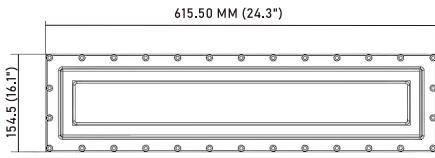
### ORDER INFORMATION

Sample Number: LT-EFLN150-30K-EM

Com.	Series	Wattage	CCT	Voltage	Control Mode	Duration (EM)
LT	EFLN	050=50W 080=80W 100=100W 150=150W 200=200W 240=240W	27K=2700K 30K=3000K 40K=4000K 50K=5000K 57K=5700K 65K=6500K	Blank=100-277VAC DV = 24-48VDC	DM=0-10VDC Dim EM=Emergency Kit	Blank=90 Min.

Application	Applies to hazardous locations of Zone 1 and Zone2 with explosive gas atmosphere, Zone 21 and Zone22 with explosive dust atmosphere.
Rating	II 2G Ex db op is IIC T5... T6, Ex db op is IIC T5... T6 Gb, Ip66
Version	2025v1

### DIMENSION (unit:mm)



### INSTALLATION

<p><b>A. Ceiling mount</b></p>	
<p><b>B. Drop mount</b></p>	
<p><b>C. WM - Wall Mount</b></p>	
<p><b>D. Pole Mounting</b></p>	